

S N D

A N D

S T N

THE FIRS

SAND & STONE

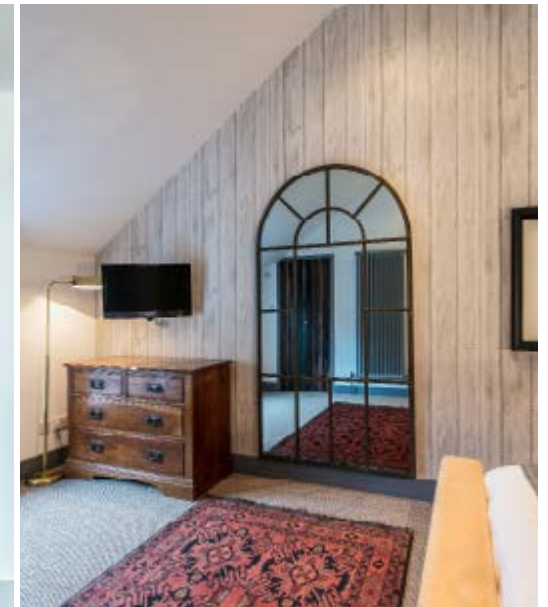
ESCAPES

SND  
AND  
STN

# THE FIRS

SLEEPS 6  
3 BEDROOM  
KINGHAM | COTSWOLDS

A large, two-storey, house with three bedrooms, The Firs has been curated with tasteful interiors and beautiful design touches in every room. Ideal for a group of six who want a relaxing weekend away, The Firs is undoubtedly one of the best three bedroom holiday homes in the Cotswolds.





## INSIDE

### THE KITCHEN & LIVING ROOM

On the ground floor, you'll find the large open-plan kitchen and dining room. The kitchen is well-equipped to concoct all measures of delicious feasts which can be enjoyed on the beautiful wooden dining table that looks upon the pretty garden, which also has its own outdoor table and parasols for warmer months. On the ground floor, guests can relax by the wood burning stove in the sitting room or enjoy the table football in the adjacent games room.

### THE BEDROOM & BATHROOM

Upstairs you'll find the master bedroom with a king size bed and an en-suite shower room. There are two further double bedrooms which share the main bathroom. Whilst The Firs is a family-friendly home, parents of infants will need to bring a travel cot. A high chair can be provided.



SND  
AND  
STN



## EXPLORE

### FOOD & DRINK

- The Chequers Pub
- The Kingham Plough
- The Wild Rabbit
- Wild Thyme
- The Bell Inn

### TO DO

- Immerse yourself in the grandeur of Blenheim Palace
- Sip on local ales at Hook Norton Brewery or spirits at Cotswolds Distillery
- Sample wonderfully sourced produce at Daylesford Organic Farm. The Haybarn Spa is particularly lovely for those in need of a spot of pampering
- Get up close and personal with the lions at the Cotswolds Wildlife Park



SND  
AND  
STN

## LOCATION

Arguably one of the most beloved and beautiful villages in the Cotswolds, Kingham is unspoilt and unpretentious, an idyllic destination for a countryside escape. With stone and thatched cottages nestled upon the village green and a Grade II listed church with a striking Gothic tower, Kingham is imbued with postcard perfect quality.

### HOW TO GET TO KINGHAM

Kingham Railway Station is a 5-minute drive from The Firs and is served by Great Western Railway between London Paddington, Great Malvern, Worcester and Hereford.

Kingham is just over a couple of hours drive from London. Detailed directions are provided upon booking. A car is a good idea to explore the local area, however, as Kingham is a village with such good amenities, a car is not totally necessary for a weekend away.

The local taxi service, Excelsior from Chipping Norton, are also very good.



SND  
AND  
STN

THE FIRS  
FEATURES

## 1 LIVING ROOM

Seating On Sofa and 2  
Armchairs

Flat Screen Smart Tv With  
Netflix

DVD Player

Wood Burning Stove

## 2 DINING ROOM

Large Country Dining Table  
For Up To 6

Patio Doors Opening Into  
The Garden

## 3 KITCHEN

6 Ring Ceramic Hob And  
Cooker

Breakfast Bar

Microwave

Toaster

Kettle

Fridge And Freezer

Dishwasher, Washing  
Machine And Dryer

Tableware And Linens,  
Pots, Pans, Cutlery,  
Glassware, Baking Utencils

## 4 BEDROOMS

Bedroom 1: King Size  
Bedroom with En-Suite

Bedroom 2: King Size  
Bedroom

Bedroom 3: Double  
Bedroom

Bathroom: Main Bathroom

## 5 OUTSIDE

Small Garden with Lawn &  
Wicker Dining Furniture

## 6 PANTRY ITEMS

Vodka, Gin & Whisky And  
Tonics

Olive Oil, Salt, Pepper,  
Sugar

Tea, A Few Nespresso Pods  
*If you are serious coffee  
drinkers please bring your own  
top up selection*

## 7 WELCOME PACK ITEMS

Eggs, Bread, Butter, Mini  
Jams, Milk & A Bottle Of  
Cremant.

# SND AND STN

SAND & STONE

ESCAPES

## PRICES

### LOW SEASON

3<sup>RD</sup> JAN - 11<sup>TH</sup> FEB

15<sup>TH</sup> FEB - 1<sup>ST</sup> APR

1<sup>ST</sup> NOV - 17<sup>TH</sup> DEC

Weekday £310 per night • Weekend £350 per night

### MID SEASON & VALENTINE'S

12<sup>TH</sup> FEB - 14<sup>TH</sup> FEB

6<sup>TH</sup> APR - 28<sup>TH</sup> APR

4<sup>TH</sup> MAY - 26<sup>TH</sup> MAY

1<sup>ST</sup> JUN - 30<sup>TH</sup> JUN

31<sup>ST</sup> AUG - 31<sup>ST</sup> OCT

Weekday £325 per night • Weekend £375 per night

### HIGH SEASON

1<sup>ST</sup> JUL - 26<sup>TH</sup> AUG

Weekday £385 per night • Weekend £455 per night

### BANK HOLIDAYS, CHRISTMAS & NEW YEAR

2<sup>ND</sup> APR - 5<sup>TH</sup> APR

29<sup>TH</sup> APR - 3<sup>RD</sup> MAY

27<sup>TH</sup> MAY - 31<sup>ST</sup> MAY

26<sup>TH</sup> AUG - 30<sup>TH</sup> AUG

18<sup>TH</sup> DEC - 2<sup>ND</sup> JAN

Weekday £450 per night • Weekend £450 per night

PRICES HERE REFLECT 2020-2021 PRICES AND ARE SUBJECT TO CHANGE.  
PLEASE CONTACT [STAY@SANDANDSTONEESCAPES.COM](mailto:STAY@SANDANDSTONEESCAPES.COM) FOR MORE INFORMATION.

SND  
AND  
STN

SAND & STONE  
ESCAPES

## BOOK

Book The Firs online at [sandandstoneescapes.com](http://sandandstoneescapes.com)

or contact us on:

[stay@sandandstoneescapes.com](mailto:stay@sandandstoneescapes.com)

+44 (0) 208 740 3097

Sand & Stone Escapes is a trading name of Beachspoke Lettings Ltd.  
Beachspoke Lettings Ltd is a limited company registered in England.  
Registered office: Unit 11, The Glasshouse, 49A Goldhawk Rd, London, W12 8QP – Company number 10094888