

S N D

A N D

S T N

THE STABLES

SAND & STONE

ESCAPES

SND
AND
STN

THE STABLES

SLEEPS 8

4 BEDROOMS

BIBURY | COTSWOLDS

Deep in its colour palette and spacious in its design, this converted barn sleeps 8 and makes the perfect countryside escape for a family or a get together with your favourite folk. Adjoined to neighbouring Bull Pen, The Stables provides a quirky take on a location suitable for large groups.



SND
AND
STN



INSIDE

THE KITCHEN & LIVING ROOM

The wonderfully dramatic dining area makes for the ideal spot to host a dinner party alongside the large kitchen island which sits beneath hanging lights. The Stables is very much an artist's paradise with walls adorned with artwork and photography that complement the greys and creams of the interior décor. The sitting room boasts a log burner inviting you in for a cosy afternoon with a glass of red. Downstairs you will also find one of the four super King bedrooms and en-suite tucked away in the corner.

THE BEDROOMS & BATHROOMS

Light plays a huge part in The Stables with many skylights highlighting the luxurious feel and finishing touches throughout. Each bedroom has a uniquely designed bathroom so make sure to check them all out during your stay. The devil is in the detail at The Stables with dark beams above and above and exposed brick under your feet.

EXPLORE

FOOD & DRINK

- Swann Inn a 10-minute walk
- The Potager at Barnsley House
- The Wild Rabbit
- Swan Brasserie
- The Bell Inn

TO DO

- Bourton-on-the-Water, dubbed The Venice of the Cotswolds, is 10 mins drive away
- Burford Garden Centre
- The Organic Farm Shop
- Immerse yourself in the grandeur of Blenheim Palace
- Sip on local ales at Hook Norton Brewery or spirits at Cotswolds Distillery
- Sample wonderfully sourced produce at Daylesford Organic Farm. The Haybarn Spa is particularly lovely for those in need of a spot of pampering
- Cotswold Water Park for peaceful lakes and waterways

Guests can also enjoy a full concierge service, including reservations, catering deliveries, recommendations for the best farmers markets and tickets for events.



SND
AND
STN

LOCATION

Bibury is a hugely popular destination as its rustic charm keep people visiting throughout the year. has a picturesque river running through with a bridge and chocolate box row of houses that provide any visitor with the ideal spot to soak up the countryside atmosphere.

HOW TO GET TO BIBURY

The Stables is located on Aldsworth Road, just a 1-minute drive after Bibury village. Bibury is located between Cirencester and Burford about a 15-minute drive from each.

Kemble station outside Cirencester, is the nearest train station and is about a 25-minute drive away. The trains run regularly throughout the day, taking around an hour and 30 minutes from Paddington.

To drive from west London it takes around an hour and 45 minutes, from Bristol it's an hour and 15 minutes, and from Oxford it's around 45 minutes. Further directions can be given before your stay.

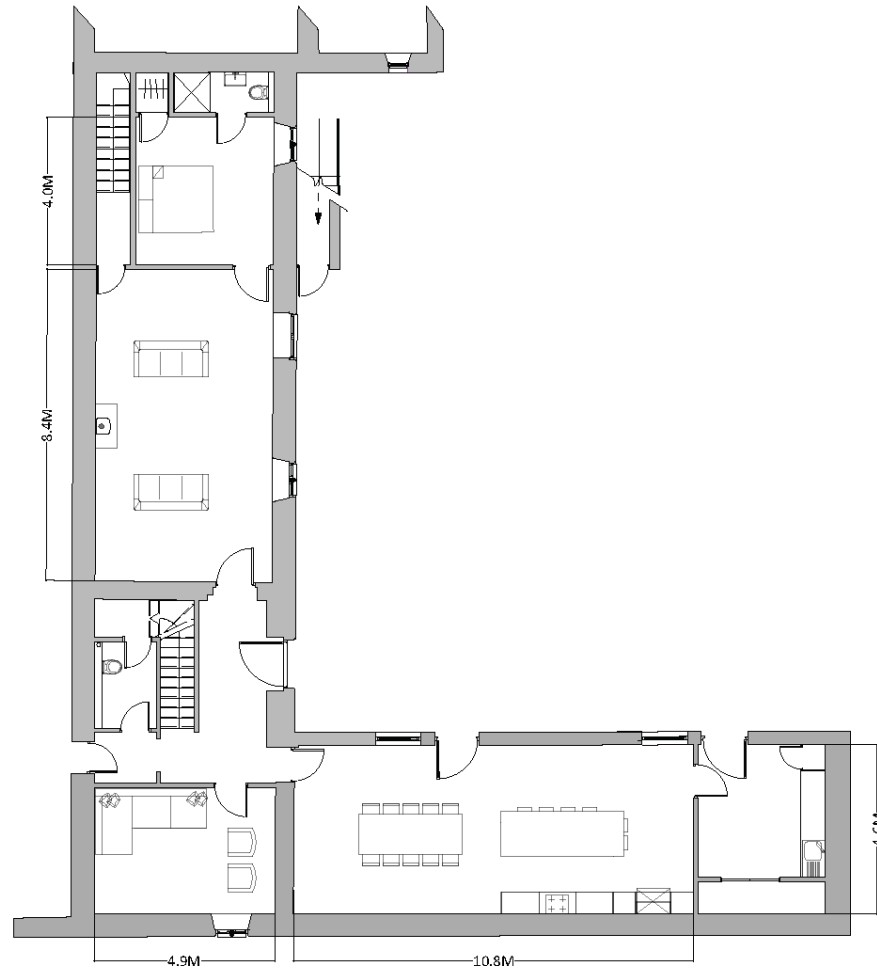
PARKING

The Stables comes with private parking.

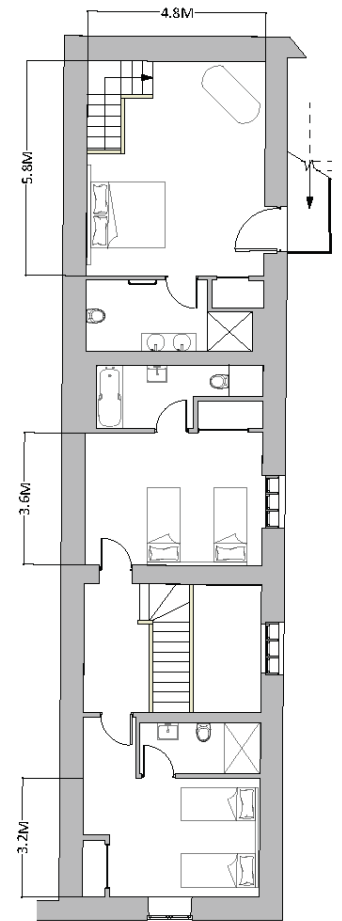


SND
AND
STN

FLOOR PLAN



GROUND FLOOR PLAN



FIRST FLOOR PLAN

SND
AND
STN

THE STABLES FEATURES

1 LIVING ROOM

2 Three Seater Sofas

2 Armchairs

Large SMART TV On A
Moveable Bracket, Sky Q
With All Sky Sports Movie
Channels, Netflix, Amazon
Prime

Sonos Wireless Speakers

Woodburner Fireplace

2 KITCHEN & DINING AREA

Dining Table With 10
Chairs

Fully Equipped, High-Spec
Kitchen

Washing/Drying Machine

Breakfast Bar With 6
Stools

3 BEDROOMS

Ground Floor: Super King
Bedroom With En-Suite

First Floor: Super King Size
Master Bedroom With Roll
Top Bathtub

Two Super King/Twin
Bedrooms With En-Suites

4 OUTSIDE

Quaint Garden At The Back
Of The House

BBQ

Terrace Furniture

Outdoor Dining

Sunlounger

5 PANTRY ITEMS

Welcome Hamper

6 GENERAL

Fibre Optic WiFi

Strictly No Smoking

Stairgate, Highchair &
Babybjorn Travel Cot (Upon
Request)

Dog-Friendly

Check In Is From 4PM &
Check Out Is By 10AM



2022 - 2023 PRICES

LOW SEASON

3RD JAN - 10TH FEB
21ST FEB - 31ST MAR
25TH APR - 28TH APR
12TH SEP - 20TH OCT
31ST OCT - 22ND DEC

Mon - Wed £500 per night • Thurs £700 per night • Fri - Sunday £750 per night

HIGH SEASON

11TH FEB - 20TH FEB
1ST APR - 14TH APR
18TH APR - 24TH APR
29TH APR - 1ST MAY (May Bank Holiday 3 night minimum)
2ND MAY - 1ST JUN
2ND JUN - 5TH JUN (Jubilee Bank Holiday 4 night minimum)
6TH JUN - 25TH AUG
26TH AUG - 28TH AUG (August Bank Holiday 3 night minimum)
29TH AUG - 11TH SEP
21ST OCT - 30TH OCT

Mon - Wed £675 per night • Thurs £900 per night • Fri - Sunday £950 per night

PEAK SEASON

15TH APR - 17TH APR (Easter weekend 3 night minimum)
23RD DEC - 29TH DEC (Christmas Holidays 6 night minimum)
30TH DEC - 1ST JAN (New Year 3 night minimum)

Mon - Wed £1,025 per night • Thurs £1,025 per night • Fri - Sunday £1,025 per night

Prices here reflect 2022-2023 prices and are subject to change.
Please contact stay@sandandstoneescapes.com for more information.

SND
AND
STN

SAND & STONE
E S C A P E S

BOOK

Book The Stables online at sandandstoneescapes.com

or contact us on:

stay@sandandstoneescapes.com

+44 (0) 208 740 3097

Sand & Stone Escapes Ltd is a limited company registered in England and Wales.
Company number: 10094888
Registered office: Unit 5, The Bull Pen, Churchill Heath Farm, Kingham Chipping Norton,
Oxfordshire, England,
OX7 6UJ