

S N D

A N D

S T N

CART SHED

SAND & STONE

ESCAPES

SND
AND
STN

CART SHED

SLEEPS 6

3 BEDROOMS

BIBURY | COTSWOLDS

Indulge and unwind in this thoughtfully restored former cart shed, now a luxury holiday retreat with a wood burner for cosy winter afternoons and sun-drenched garden for summer relaxation. Impeccably styled conversion, lovingly transformed from farm building to the homeliest of spaces, sleeping up to 6 guests in the heart of the Cotswolds.

Please note, Cart Shed does not allow pets.



SND
AND
STN



INSIDE

GROUND FLOOR

The Cart Shed is the perfect juxtaposition of a traditional building still beaming with original features, against the wonderfully modern, slate hued interiors found throughout the design. The white tiled kitchen is a simple yet well stocked space with a breakfast bar perfect for your morning coffee. You can also find the open-plan sitting and dining area one end and the Master bedroom accompanied by en-suite wet room and spacious dressing room at the other.

FIRST FLOOR

Head upstairs to the two remaining super King/twin bedrooms with their rustic, exposed rafters and charming window sills overlooking the sun-drenched garden where children may run a mockery on the green lawn. Cart Shed is the ideal choice for a family looking for a luxurious space to relax or a group of friends headed to the country for a holiday of style and design.



FOOD & DRINK

- The Potager at Barnsley House
- The Wild Rabbit
- Swan Brasserie
- The Bell Inn

TO DO

- Bourton-on-the-Water, dubbed The Venice of the Cotswolds, is 10-minute drive away
- Burford Garden Centre
- The Organic Farm Shop
- Immerse yourself in the grandeur of Blenheim Palace
- Sip on local ales at Hook Norton Brewery or spirits at Cotswolds Distillery
- Sample wonderfully sourced produce at Daylesford Organic Farm. The Haybarn Spa is particularly lovely for those in need of a spot of pampering
- Cotswold Water Park for peaceful lakes and waterways

Guests can also enjoy a full concierge service, including reservations, catering deliveries, recommendations for the best farmers markets and tickets for events.

SND
AND
STN

LOCATION

Bibury is a hugely popular destination as its rustic charm keep people visiting throughout the year. It has a picturesque river running through with a bridge and chocolate box row of houses that provide any visitor with the ideal spot to soak up the countryside atmosphere.

HOW TO GET TO BIBURY

The Cart Shed is located on Aldsworth Road, just a 1-minute drive after Bibury village. Bibury is located between Cirencester and Burford about a 15-minute drive from each.

Kemble station outside Cirencester, is the nearest train station and is about a 25-minute drive away. The trains run regularly throughout the day, taking around an hour and 30 minutes from Paddington.

To drive from west London it takes around an hour and 45 minutes, from Bristol it's an hour and 15 minutes, and from Oxford it's around 45 minutes. Further directions can be given before your stay.

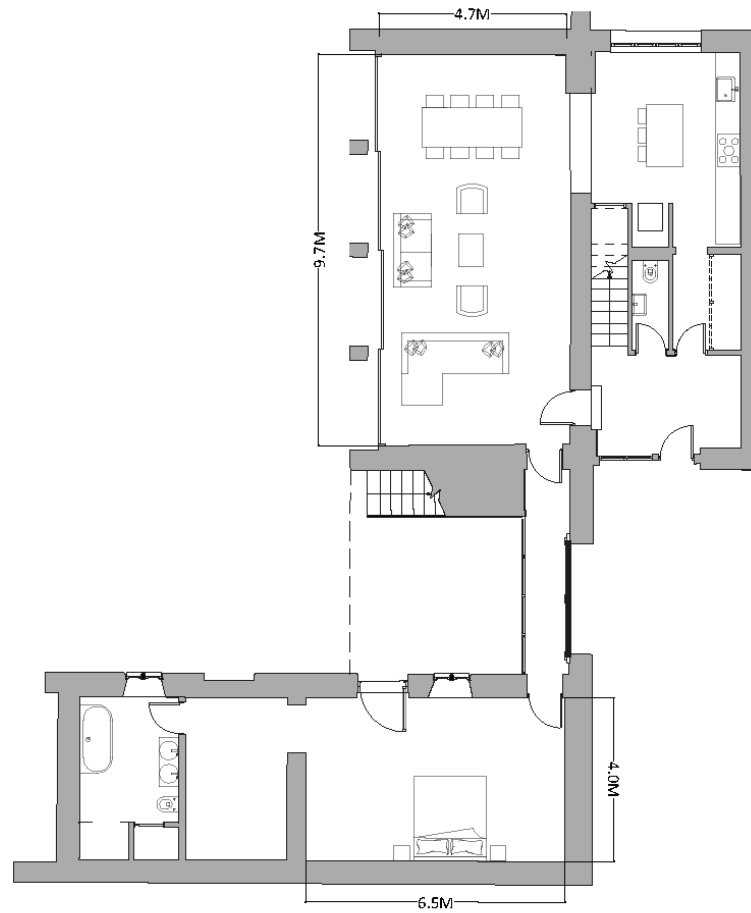
PARKING

The Cart Shed comes with private parking.

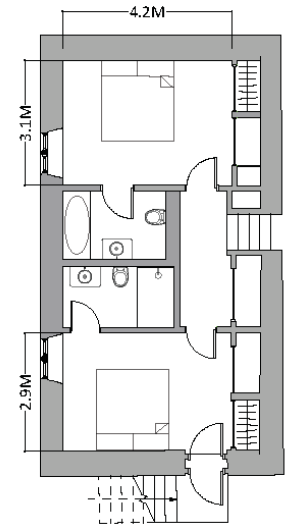


SND
AND
STN

FLOOR PLAN



GROUND FLOOR



FIRST FLOOR

SND
AND
STN

CART SHED
FEATURES

1 LIVING ROOM

3 Seater Sofa

2 Armchairs

Large SMART TV On A
Moveable Bracket, Sky Q
With All Sky Sports Movie
Channels, Netflix, Amazon
Prime

Sonus Wireless Speakers

Woodburner Fireplace

2 KITCHEN & DINING AREA

Dining Table With 8 Chairs

Fully Equipped, High-Spec
Kitchen

Washing/Drying Machine

Breakfast Bar With 3
Stools

3 BEDROOMS

Master Bedroom: Super
King Size Bed With Walk-In
Wet Room

Super King Size/Twin
Bedroom With En-Suite
Bathtub

Super King Size/Twin
Bedroom With En-Suite
Shower

4 OUTSIDE

BBQ

Outdoor Furniture

Grass Lawn

5 PANTRY ITEMS

Welcome Hamper

6 GENERAL

Fibre Optic WiFi

Strictly No Smoking

Stairgate, Highchair And
Babybjorn Travel Cot (Upon
Request)

Check In Is From 4PM &
Check Out Is By 10AM

SND
AND
STN

SAND & STONE
ESCAPES

2022 - 2023 PRICES

LOW SEASON

3RD JAN - 10TH FEB
21ST FEB - 31ST MAR
25TH APR - 28TH APR
12TH SEP - 20TH OCT
31ST OCT - 22ND DEC

Mon - Wed £400 per night • Thurs £500 per night • Fri - Sunday £550 per night

HIGH SEASON

11TH FEB - 20TH FEB
1ST APR - 14TH APR
18TH APR - 24TH APR
29TH APR - 1ST MAY (May Bank Holiday 3 night minimum)
2ND MAY - 1ST JUN
2ND JUN - 5TH JUN (Jubilee Bank Holiday 4 night minimum)
6TH JUN - 25TH AUG
26TH AUG - 28TH AUG (August Bank Holiday 3 night minimum)
29TH AUG - 11TH SEP
21ST OCT - 30TH OCT

Mon - Wed £525 per night • Thurs £750 per night • Fri - Sunday £775 per night

PEAK SEASON

15TH APR - 17TH APR (Easter weekend 3 night minimum)
23RD DEC - 29TH DEC (Christmas Holidays 6 night minimum)
30TH DEC - 1ST JAN (New Year 3 night minimum)

Mon - Wed £850 per night • Thurs £850 per night • Fri - Sunday £850 per night

Prices here reflect 2022-2023 prices and are subject to change.
Please contact stay@sandandstoneescapes.com for more information.

SND
AND
STN

SAND & STONE
E S C A P E S

BOOK

Book Cart Shed online at sandandstoneescapes.com

or contact us on:

stay@sandandstoneescapes.com

+44 (0) 208 740 3097

Sand & Stone Escapes Ltd is a limited company registered in England and Wales.

Company number: 10094888

*Registered office: Unit 5, The Bull Pen, Churchill Heath Farm, Kingham Chipping Norton, Oxfordshire, England,
OX7 6UJ*