

SND

AND

STN

OLD HAY BARN

SAND & STONE

ESCAPES

SND
AND
STN

OLD HAY BARN

SLEEPS 8

4 BEDROOMS

BIBURY | COTSWOLDS

Perfect for families, with expansive views, private outdoor space, generous living areas and separate games room – guests can't help but fall in love with this old Cotswold stone barn. Standing on its own in front of a breath-taking view of the rolling hills beyond. Old Hay Barn sleeps 8 and is both private and spacious.



SND
AND
STN



INSIDE

THE KITCHEN & LIVING ROOM

As you enter, a spacious, glass-fronted hallway transforms into a large living space with log burning fire and a trio of sofas to relax on. The floor-to-ceiling windows really make use of the expansive views the Old Hay Barn boasts compared to its neighbours. And for the little ones, a snug room only next door provides space for the little travellers amongst you to settle down.

THE BEDROOMS & BATHROOMS

Climb a central staircase where you find four adjoining super King bedrooms along a long corridor high in the rafters. Two of these rooms can be made into twins but all include vast views of the Cotswold countryside and exude luxury with designer touches.

SND
AND
STN



EXPLORE

FOOD & DRINK

- The Potager at Barnsley House
- The Wild Rabbit
- Swan Brasserie
- The Bell Inn

TO DO

- Bourton-on-the-Water, dubbed The Venice of the Cotswolds, is 10-minute drive away
- Burford Garden Centre
- The Organic Farm Shop
- Immerse yourself in the grandeur of Blenheim Palace
- Sip on local ales at Hook Norton Brewery or spirits at Cotswolds Distillery
- Sample wonderfully sourced produce at Daylesford Organic Farm. The Haybarn Spa is particularly lovely for those in need of a spot of pampering
- Cotswold Water Park for peaceful lakes and waterways

Guests can also enjoy a full concierge service, including reservations, catering deliveries, recommendations for the best farmers markets and tickets for events. There is true luxury to be experienced at the Old Hay Barn.

SND
AND
STN

LOCATION

Bibury is a hugely popular destination as its rustic charm keep people visiting throughout the year. has a picturesque river running through with a bridge and chocolate box row of houses that provide any visitor with the ideal spot to soak up the countryside atmosphere.

HOW TO GET TO BIBURY

Old Hay Barn is located on Aldsworth Road, just a 1-minute drive after Bibury village. Bibury is located between Cirencester and Burford about a 15-minute drive from each.

Kemble station outside Cirencester, is the nearest train station and is about a 25-minute drive away. The trains run regularly throughout the day, taking around an hour and 30 minutes from Paddington.

To drive from west London it takes around an hour and 45 minutes, from Bristol it's an hour and 15 minutes, and from Oxford it's around 45 minutes. Further directions can be given before your stay.

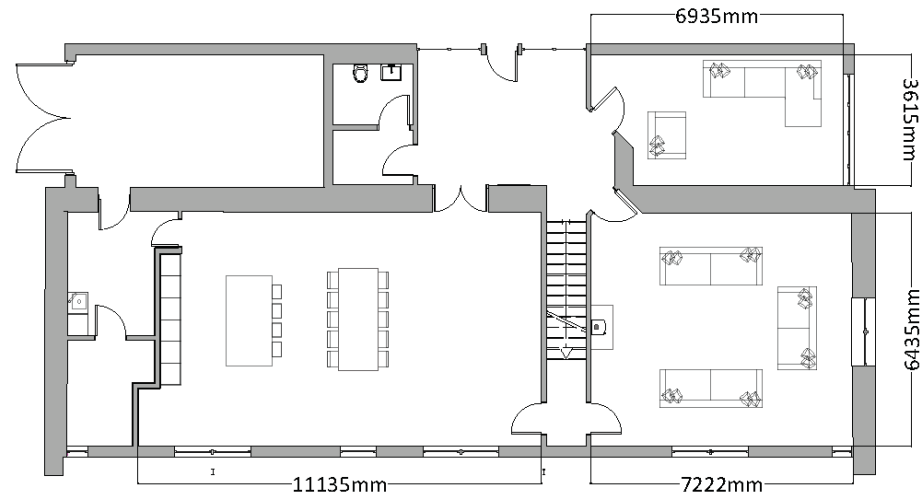
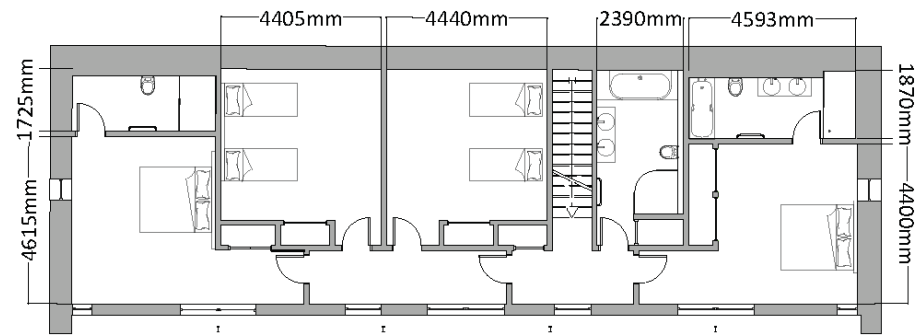
PARKING

Old Hay Barn comes with private parking.



SND
AND
STN

FLOOR PLAN



SND
AND
STN

OLD HAY BARN FEATURES

1 LIVING ROOM

Large L-Shaped Sofa

2 Armchairs

3 Three Seater Sofas

Large SMART TV On A
Moveable Bracket, Sky Q
With All Sky Sports Movie
Channels, Netflix, Amazon
Prime

Sonus Wireless Speakers

Woodburner Fireplace

2 KITCHEN & DINING AREA

Dining Table With 8 Chairs

Fully Equipped, High-Spec
Kitchen

Washing/Drying Machine

Breakfast Bar With 4
Stools

3 BEDROOMS

Master Bedroom 1: Super
King Size Bedroom With
Roll Top Bathtub

Master Bedroom 2: Super
King Size Bedroom

Two Super King/Twin
Bedrooms

4 OUTSIDE

Spacious Lawn

Garden Furniture

Outdoor Eating

BBQ

5 PANTRY ITEMS

Welcome Hamper

6 GENERAL

Fibre Optic WiFi

Strictly No Smoking

Stairgate, Highchair &
Babybjorn Travel Cot (Upon
Request)

Dog-Friendly

Check In Is From 4PM &
Check Out Is By 10AM



2022 - 2023 PRICES

LOW SEASON

3RD JAN - 10TH FEB
21ST FEB - 31ST MAR
25TH APR - 28TH APR
12TH SEP - 20TH OCT
31ST OCT - 22ND DEC

Mon - Wed £550 per night • Thurs £775 per night • Fri - Sunday £800 per night

HIGH SEASON

11TH FEB - 20TH FEB
1ST APR - 14TH APR
18TH APR - 24TH APR
29TH APR - 1ST MAY (May Bank Holiday 3 night minimum)
2ND MAY - 1ST JUN
2ND JUN - 5TH JUN (Jubilee Bank Holiday 4 night minimum)
6TH JUN - 25TH AUG
26TH AUG - 28TH AUG (August Bank Holiday 3 night minimum)
29TH AUG - 11TH SEP
21ST OCT - 30TH OCT

Mon - Wed £750 per night • Thurs £975 per night • Fri - Sunday £1,000 per night

PEAK SEASON

15TH APR - 17TH APR (Easter weekend 3 night minimum)
23RD DEC - 29TH DEC (Christmas Holidays 6 night minimum)
30TH DEC - 1ST JAN (New Year 3 night minimum)

Mon - Wed £1,150 per night • Thurs £1,150 per night • Fri - Sunday £1,150 per night

Prices here reflect 2022-2023 prices and are subject to change.
Please contact stay@sandandstoneescapes.com for more information.

SND
AND
STN

SAND & STONE
E S C A P E S

BOOK

Book Old Hay Barn online at sandandstoneescapes.com

or contact us on:

stay@sandandstoneescapes.com

+44 (0) 208 740 3097

Sand & Stone Escapes Ltd is a limited company registered in England and Wales.

Company number: 10094888

Registered office: Unit 5, The Bull Pen, Churchill Heath Farm, Kingham Chipping Norton, Oxfordshire, England,
OX7 6UJ